

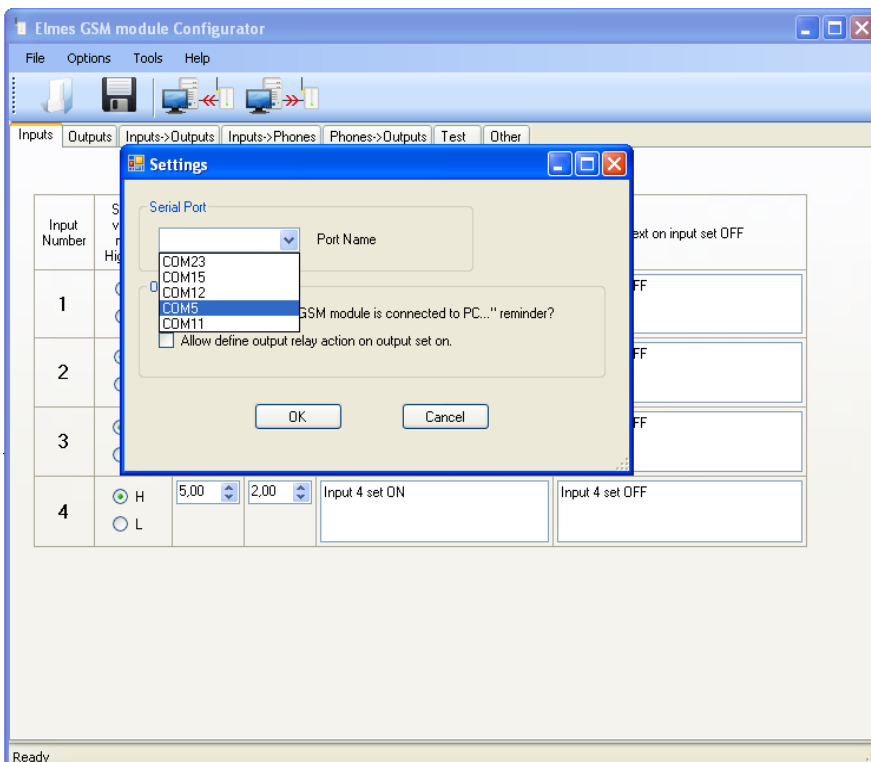
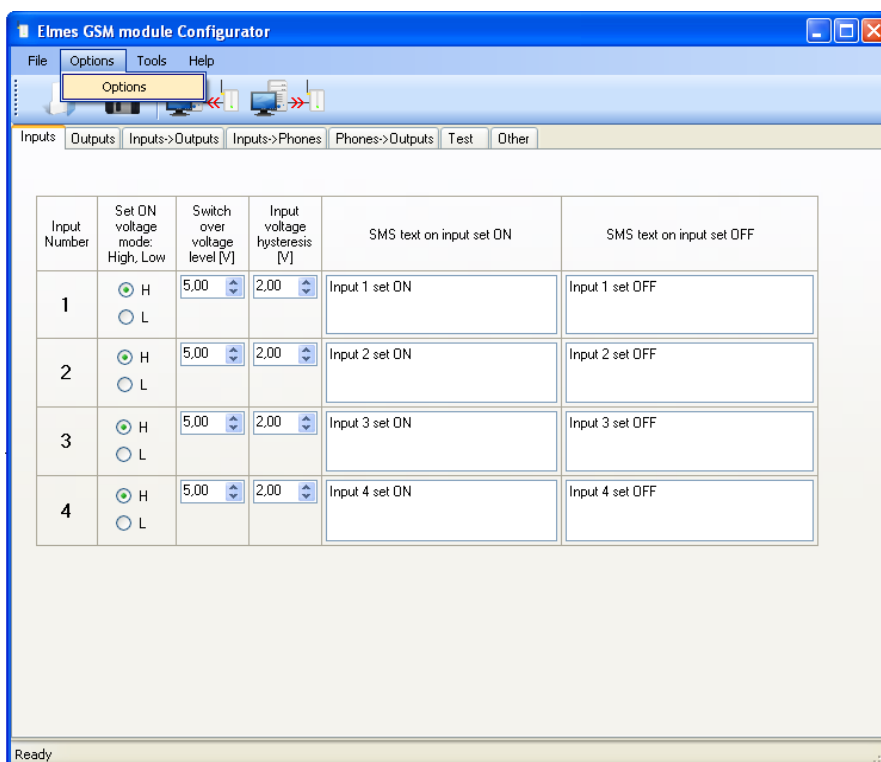
GSM 2

Instalation:

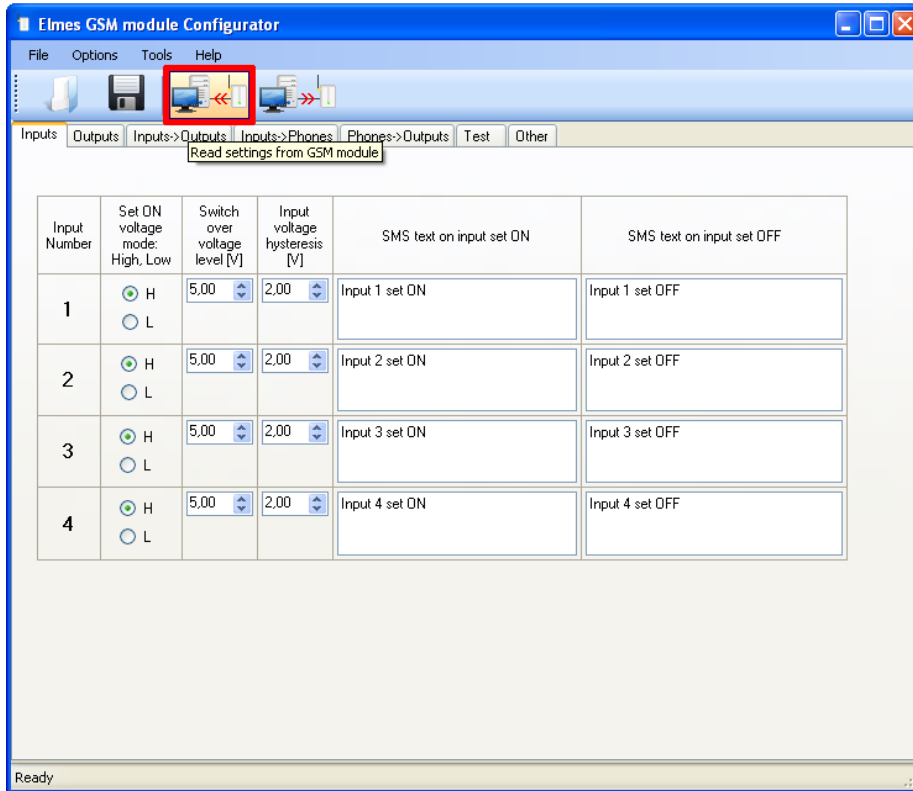
- Software Elmes GSM2
http://www.elmes.pl/admin/upload/pliki/GSM2_configurator.zip
- Drivers
<http://www.elmes.pl/admin/upload/pliki/2a.rar>

Configuration:

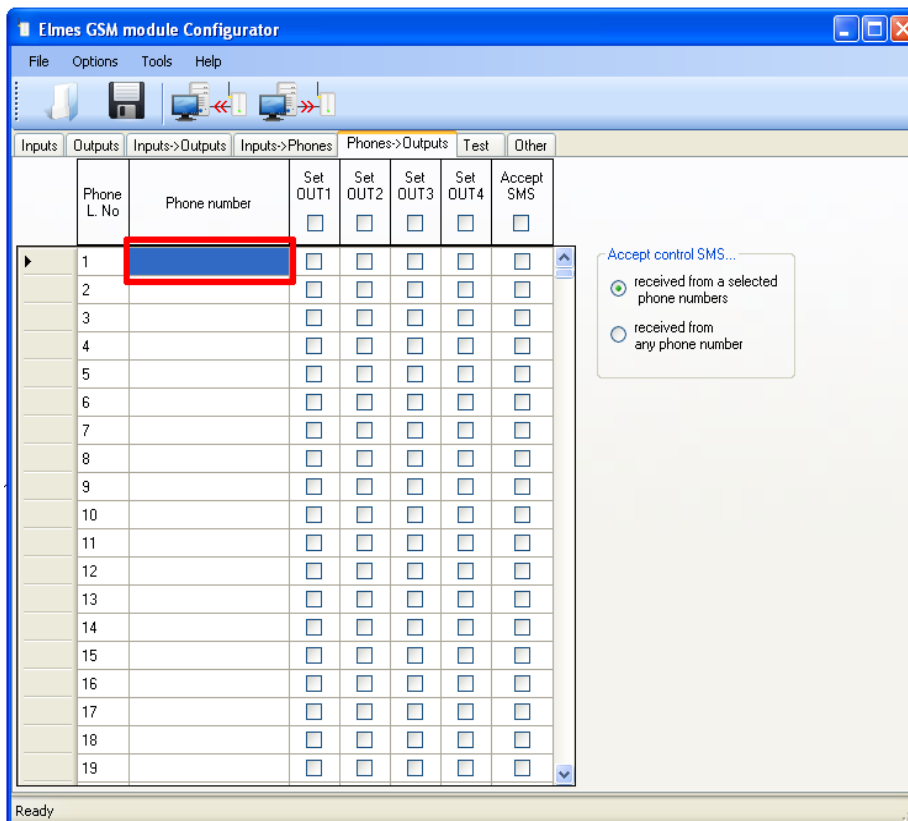
Please connect device to USB port (use miniUSB->USB cable). After this, power up GSM module and install a driver. On system you should see new COMx device (x-port number). Next, launch a Configuration Software and choice a COM Port on Options.



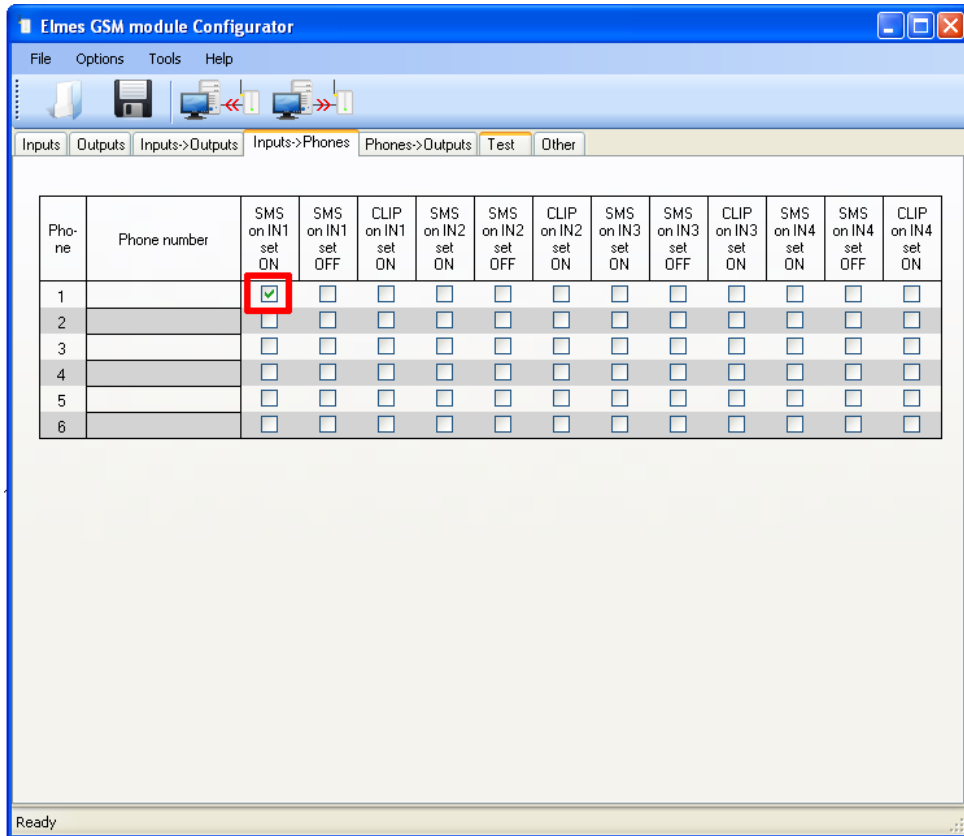
Next please read a configuration from GSM module:



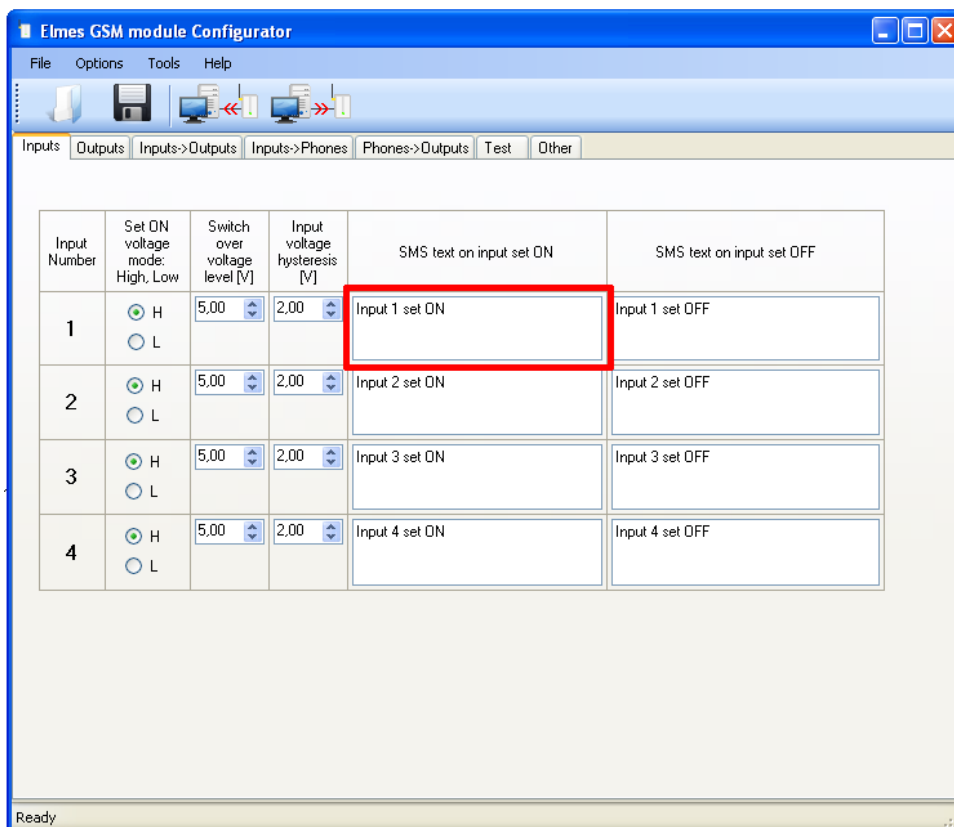
Next step is set a phone number. Go to "**PHONES->OUTPUT**" tab and enter a phone number for SMS Messages:



Next step is a set input privileges for number. Go to "**INPUT->PHONES**" tab and thick "**SMS on IN1 set ON**".



On tab "**Inputs**" you can change a SMS Message for alarms. If you want please change a text.



Configuration is done. Please send new config to device by pressing a button:

